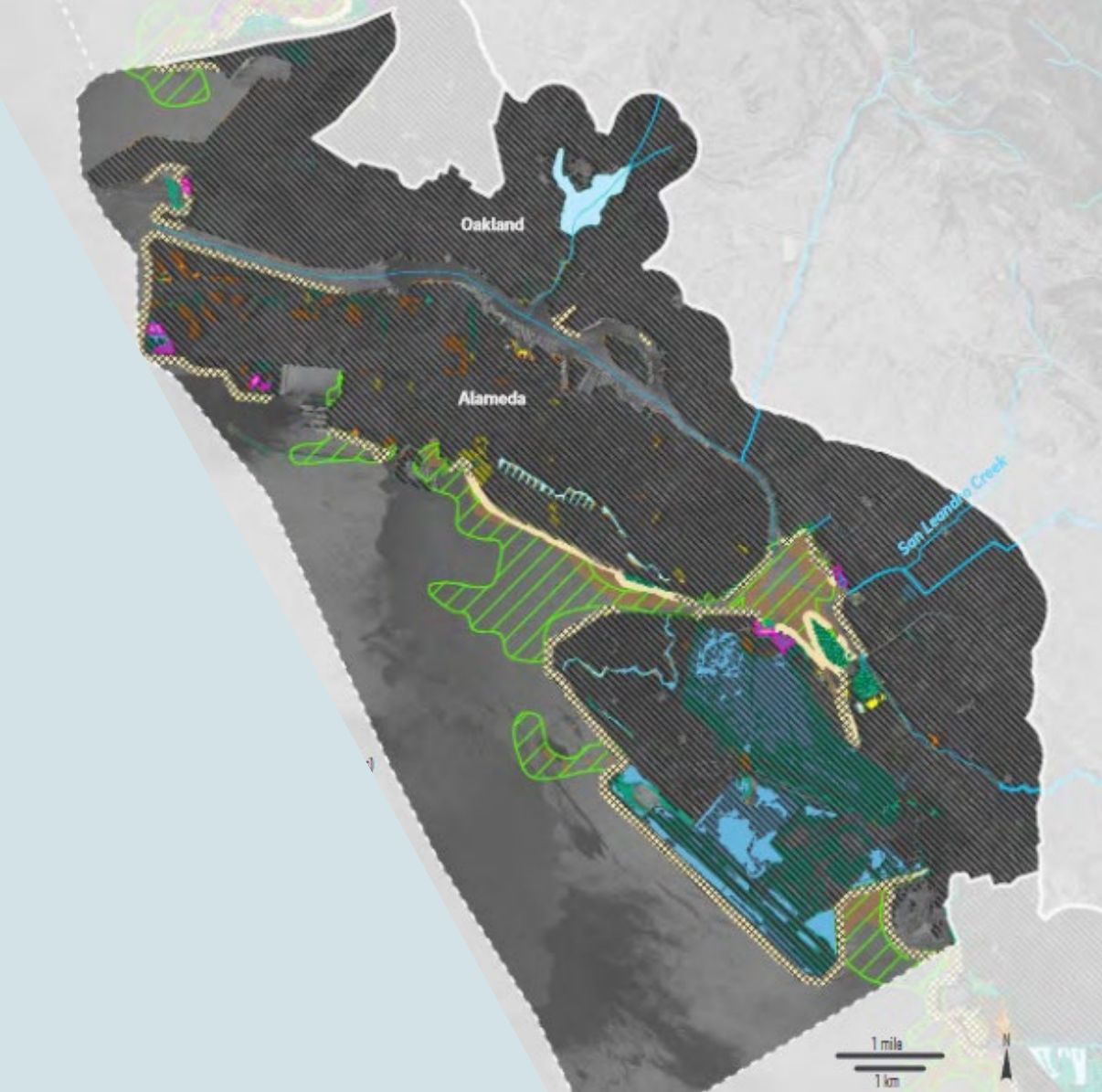


Oakland Alameda Adaptation Committee

March 20, 2024





San Leandro operational landscape unit
(one of 30 OLUs in Bay Area)

The **Oakland Alameda Adaptation Committee (OAAC)** coordinates the Oakland Alameda sub-region flood and adaptation projects to protect and restore water quality, habitat, recreation and community resilience.



OAAC: Steering Committee

Agencies

- Caltrans
- City of Alameda
- City of Oakland
- East Bay Regional Park District
- Port of Oakland
- S.F. Bay Regional Water Quality Control Board
- Alameda County Flood Control Agency

Community Partners

- Community Action for a Sustainable Alameda
- Greenbelt Alliance
- Hood Planner/East Oakland Neighborhood Initiative
- Sogorea Te' Land Trust
- West Oakland Environmental Indicators Project



West Oakland
Environmental
Indicators
Project



OAAC Projects Accomplishments

- Onboarded CMG consultant team and Community Partners
- King Tides Site Walk January 11, 2024
- Project charter
- Existing Conditions Report
- Community Engagement Strategy
- Submitted \$55 million FEMA BRIC grant for BFI/Doolittle Dr/East Oakland areas
- Requested federal funding for Oakland-Alameda Estuary Project
- Initiated discussion on governance next steps with Community Partners and agency stakeholders



King Tides Site Walk



OAAC: Funded Projects (2023-2025)

Oakland-Alameda Adaptation Committee Projects



Sub-regional
Adaptation
Plan



Oakland-
Alameda
Estuary
Adaptation
Project



Bay Farm
Island
Adaptation
Project



cmg

Landscape
Architecture



pathways
CLIMATE INSTITUTE

ESA



moffatt & nichol

Schaaf & Wheeler
CONSULTING CIVIL ENGINEERS

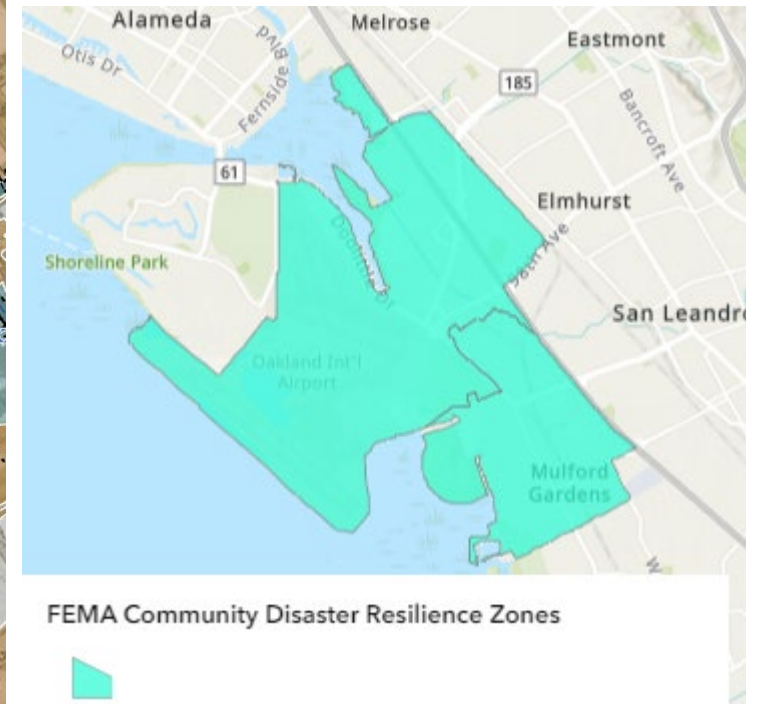
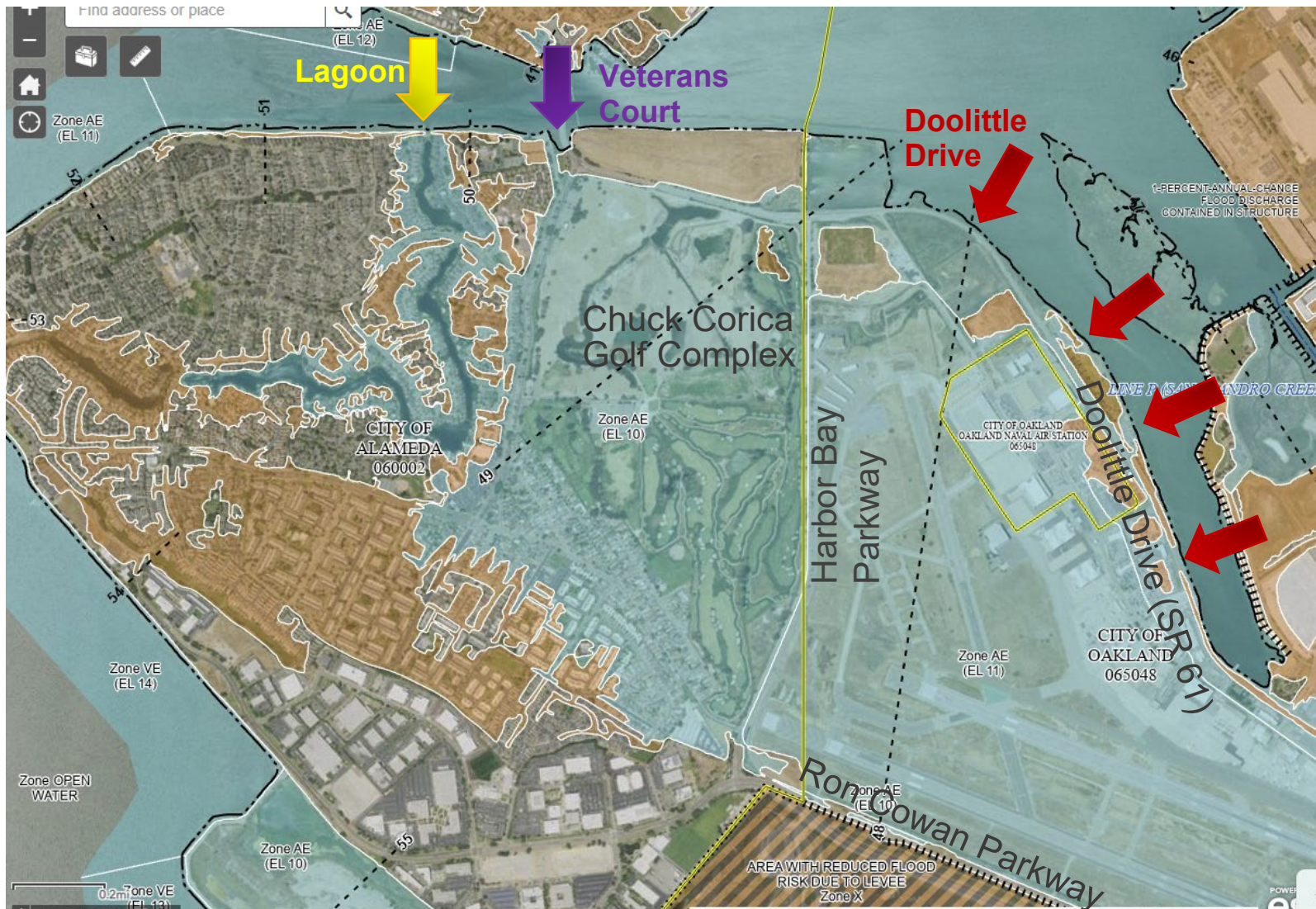
NHA | ADVISORS

Financial & Policy Strategies.
Delivered.



Earth Mechanics, Inc.
Geotechnical and Earthquake Engineering

Bay Farm Island/Doolittle Drive Adaptation



BFI/Airport CDRZ: BRIC Request



BRIC federal:
\$50 m (90%)

Non-federal:
\$5.5 m (10%)

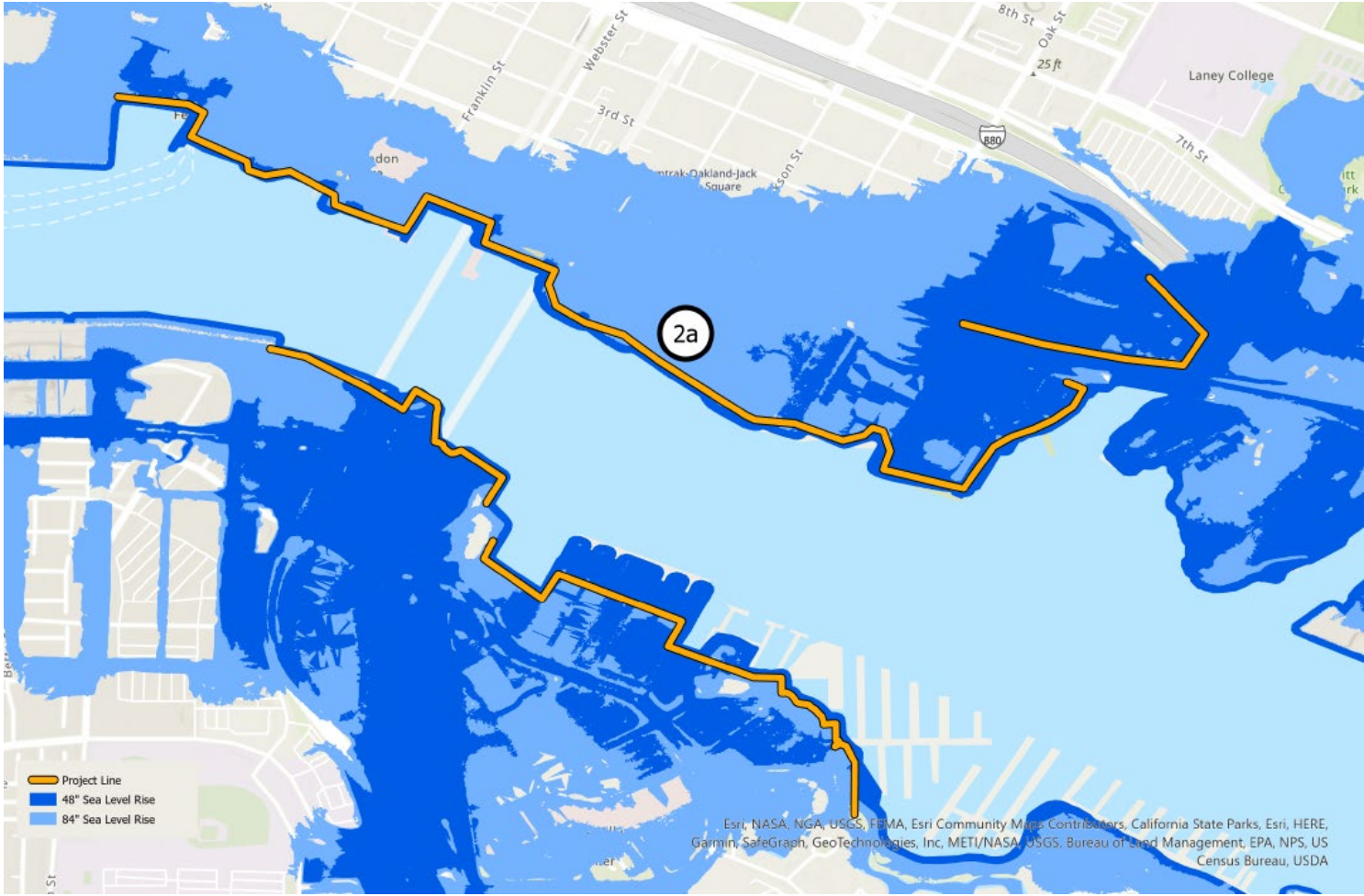
Total: \$55.5 m

Start: 2025

Construction:
2028



Oakland-Alameda Estuary Adaptation Project



www.alamedaca.gov/AdaptationEstuary



OAAC Projects Next Steps

- Adaptation Planning Principles
- Long-term plan shoreline typologies
- First round of community outreach May – June
- Draft alternatives

