

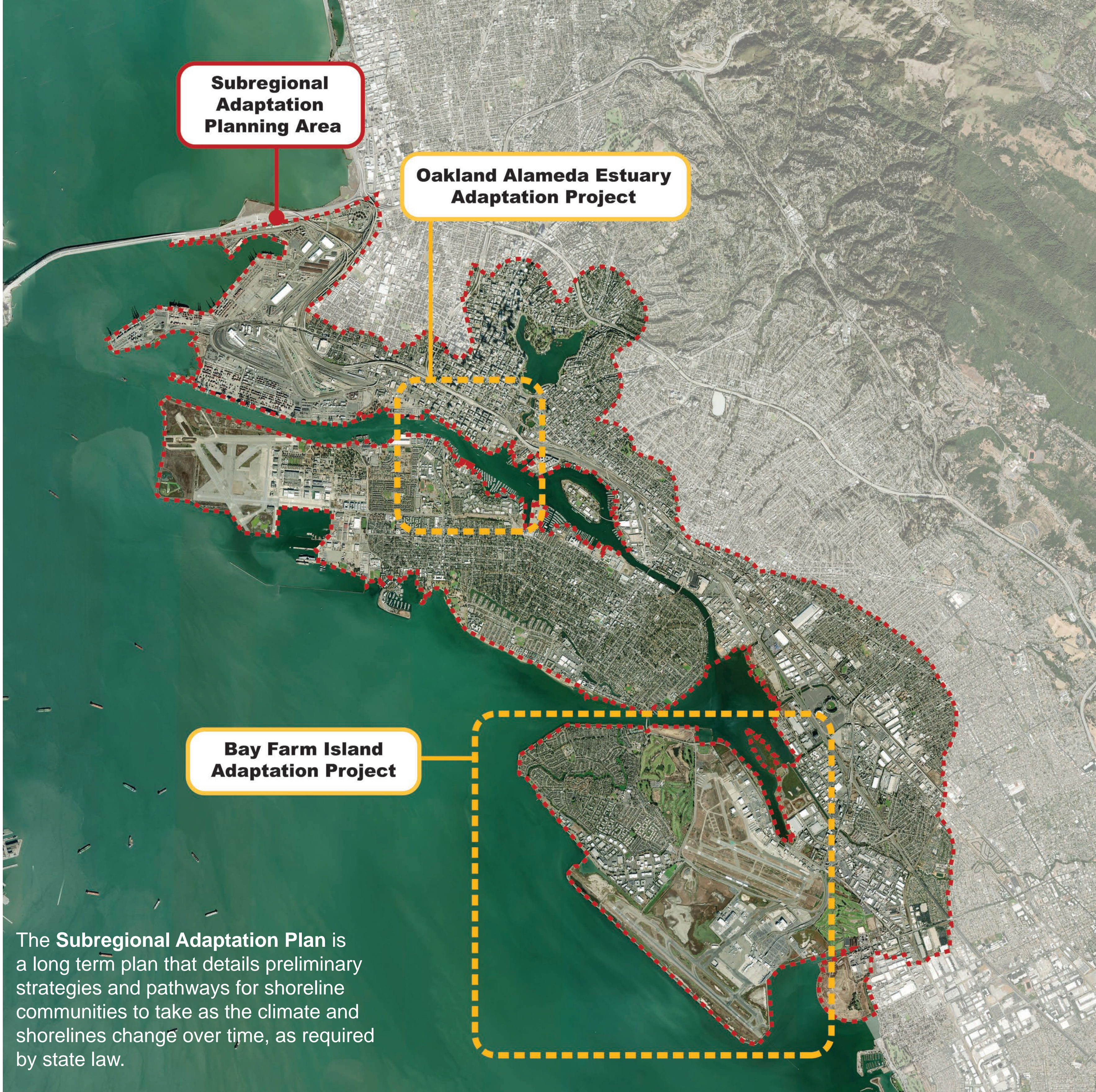
# PROJECT AREAS

## Oakland Alameda Adaptation Committee (OAAC ADAPT)

OAAC is currently collaborating on three funded adaptation projects that address sea level rise vulnerabilities in the cities of Alameda and Oakland and at the Port of Oakland. These projects seek to address areas of near-term vulnerability while also building a long-term framework for future collective action and planning.

The below projects, referred to as the OAAC ADAPT Projects, are funded through 2025.

### SUBREGIONAL LONG TERM ADAPTATION PLAN



### OAKLAND ALAMEDA ESTUARY ADAPTATION PROJECT\*



The **Oakland Alameda Estuary Project** is a near-term sea level rise adaptation design concept to address increased coastal, stormwater, and groundwater flooding for up to two feet of sea level rise over the coming decades. The project will include strategies to elevate and adapt low-lying areas of the shoreline combined with green infrastructure such as rain gardens and storm drainage improvements.

### BAY FARM ISLAND ADAPTATION PROJECT\*



The **Bay Farm Island Adaptation Project** is a near-term sea level rise adaptation project to address two feet of sea level rise over the coming decades. This project also will include long-term adaptation strategies for the project area (2080 and beyond).

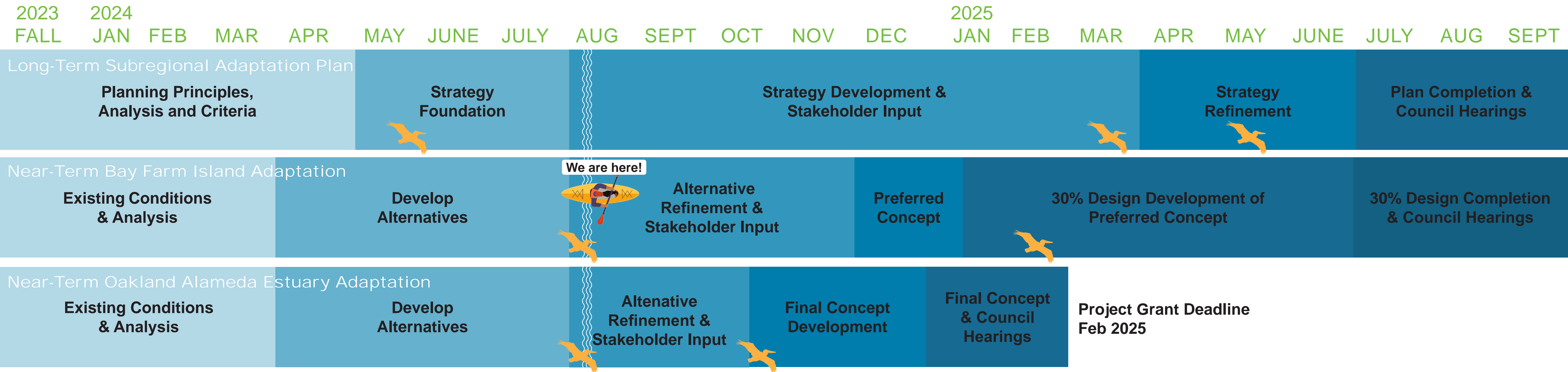
*\*Adaptation Alternatives for the Estuary and Bay Farm Island Projects are developed to a conceptual planning level only.*



# PROJECT INTRODUCTION

Oakland Alameda Adaptation Committee (OAAC ADAPT)

## OAAC ENGAGEMENT TIMELINE



 Community Engagement Event

### ABOUT OAAC

The Oakland Alameda Adaptation Committee (“OAAC”) is a coalition of shoreline communities and stakeholders working to accelerate sea level rise adaptation, protect and restore water quality, recreation and habitat, and promote community resilience. OAAC includes jurisdictions, agencies and community-based organizations that have an interest in the Oakland-Alameda shoreline, as well as regional, state and federal collaborators. The primary goal of OAAC is to create inclusive, transformative, and equitable climate-ready communities along the Oakland and Alameda shoreline.

Since flooding does not respect jurisdictional boundaries, adapting to sea level rise requires a new approach to cross jurisdictional planning that brings a broad coalition of community groups and governmental agencies to the table. Currently, OAAC relies on a project charter as the primary governance strategy, which is equivalent to a non-binding Memorandum of Understanding (MOU) between the agencies and community partners. For future coordination, decision-making and project implementation, OAAC is considering other subregional governance frameworks to maximize potential grant funding, leverage best practices in socially equitable governance, and build long-term institutional capacity. Options under consideration offer a variety of leadership structures and levels of authority.

For more information, contact the Greenbelt Alliance: [vflores@greenbelt.org](mailto:vflores@greenbelt.org) | (510) 935-3447

### OAAC GUIDING PRINCIPLES

- **Prepare** for flooding, sea level and groundwater rise
- **Coordinate efforts** across agencies, jurisdictions, and community groups to expedite **development of critical adaptation projects** and improve overall health of the estuary
- **Prioritize habitat, nature-based solutions and green infrastructure.** Consider place-based sediment management strategies.
- **Improve recreational access** to the shoreline and air quality.
- **Protect residents and vulnerable communities** living on or near the shoreline and provide benefit and economic opportunities to those communities that are impacted by climate change, lack of infrastructure and historic disinvestment.
- **Advocate** for training and skill development for underserved communities.
- **Serve** as example on subregional adaptation.



# PROJECT INTRODUCTION

Oakland Alameda Adaptation Committee (OAAC ADAPT)

## PLANNING PRINCIPLES

### GENERAL

- **Sea Level Rise Adaptation Planning Criteria:** Follow best available scientific guidance on sea level rise. Refer to SLR Adaptation Planning Criteria.
- **Pathways Approach:** Use a Pathways approach to adaptation planning that is site specific and includes measures for monitoring, clearly defined triggers, and a phasing strategy that allows for future adaptations.
- **Multi-benefit:** Embrace a multi-benefit approach that ensures public health and safety, respects natural systems, reduces risk to people, places, and capital through multipurpose design and green infrastructure planning.
- **Equity and Environmental Justice:** Prioritize equity and environmental justice outcomes for vulnerable communities.

### COMMUNITY HEALTH AND WELLBEING

- Ensure that adaptation measures safeguard communities from the public health consequences of flooding and support healthy environments, public safety, and quality of life (BCDC Draft One Bay Vision).
- Meaningfully engage and empower communities in adaptation decision-making processes. (BCDC Draft One Bay Vision)
- Prioritize planning to address risks to essential community assets, services including Bay ecosystem services, and cultural resources. (BCDC Draft One Bay Vision)
- Prioritize economic opportunities from adaptation in disadvantaged communities through local hire, workforce development, and other community benefits. (BCDC Draft One Bay Vision)

### CRITICAL INFRASTRUCTURE AND SERVICES

- Maintain or improve service continuity for everyone, by protecting or relocating critical infrastructure while minimizing vulnerabilities of new infrastructure networks to future flooding hazards. (BCDC Draft One Bay Vision)
- Prioritize adaptations that address service deficiencies in underserved communities. (BCDC Draft One Bay Vision)

### TRANSPORTATION AND TRANSIT

- Adapt local and regional transportation systems to ensure safe and reliable connectivity by air, land, and water. (BCDC Draft One Bay Vision)
- Ensure continuity and equitable service in transit dependent communities. (BCDC Draft One Bay Vision)
- Promote active, low emissions mobility options for environmental and economic benefit. (BCDC Draft One Bay Vision)



CITY OF OAKLAND



ALAMEDA





# PROJECT INTRODUCTION

Oakland Alameda Adaptation Committee (OAAC ADAPT)

## PLANNING PRINCIPLES

### ECOSYSTEM HEALTH AND RESILIENCE

- Prioritize nature-based solutions wherever possible
- Incorporate habitat connectivity, sediment management, and whole watershed approaches into shoreline planning and projects. Improve subtidal, intertidal, transitional, and upland ecosystems, to the greatest extent possible.
- Identify and facilitate opportunities for ecosystems to migrate landward and seaward to support and enhance natural adaptation processes. (BCDC Draft One Bay Vision)
- Evaluate the environmental benefits and impacts of the adaptation measures as part of the cost/benefit evaluation of each.

### PUBLIC ACCESS, RECREATION, AND URBAN DESIGN

- Provide contiguous and equitable access along the waterfront and to the water in support of the San Francisco Bay Trail, the San Francisco Bay Water Trail and other active transportation corridors.
- Prioritize connecting disadvantaged neighborhoods to a healthy Bay, creating equitable access for diverse communities. (BCDC Draft One Bay Vision)
- Expand and improve diverse varied public access, such as recreation opportunities and water-dependent or culturally significant waterfront uses, through adaptation. (BCDC Draft One Bay Vision)
- Maintain the physical and visual relationship between landside communities and the San Francisco Bay, parks, ecological features, and maritime facilities by minimizing the use of tall, vertical walls at the water's edge; and using available landside elevation for gradual adaptation.
- Where appropriate, provide a high-quality public realm while adapting the shoreline to address sea level rise, including pedestrian spaces that are accessible for all ages and abilities, active edges, regular access to open space, views of the water and waterfront activities, and clear wayfinding.
- Prioritize adaptation strategies that avoid demolition and maintain the integrity of and access to historical resources (districts, buildings, structures, sites, objects listed or eligible for listing in the California Register of Historical Resources), including those associated with local maritime history.
- Balance the need for human enjoyment, sustenance, and cultural connection to the Bay with healthy ecosystems. (BCDC Draft One Bay Vision)

### GOVERNANCE, COLLABORATION, AND FINANCE

- Continue the governance commitments established by OAAC ADAPT to date and consider more formal governance options for future project phases.
- Ensure local and regional governments collaborate to address shared flooding risk, identify multi-benefit adaptation opportunities, including nature-based solutions, and avoid adverse flooding impacts to other jurisdictions. (BCDC Draft One Bay Vision)
- Engage with indigenous partners and community partners at each step in the planning, implementation, and management of shoreline adaptation projects. (BCDC Draft One Bay Vision)
- Incorporate multi-benefit design solutions into projects to best meet community needs and maximize grant funding potential.
- Incorporate near-term benefits into long-term planning and design strategies for the communities that will vote on funding the local share of cost.
- Minimize the potential future local share tax impact on the local community, by incorporating project features that benefit stakeholders at multiple scales, particularly those on a regional, statewide, or national basis.

### HOUSING, DEVELOPMENT, AND LAND USE

- Adapt existing development equitably and plan new and re-development projects to ensure community safety, equity, and Bay ecological health. (BCDC Draft One Bay Vision)
- Align land use planning with risk mitigation while considering long-term economic vitality for all. (BCDC Draft One Bay Vision)

### GROUNDWATER AND SHORELINE CONTAMINATION

- Integrate emerging science on shallow groundwater rise into planning and adaptation decisions and identify innovative solutions. (BCDC Draft One Bay Vision)
- Prioritize remediation of contaminated sites in Environmental Justice communities, while minimizing transferring contamination burden. (BCDC Draft One Bay Vision)

