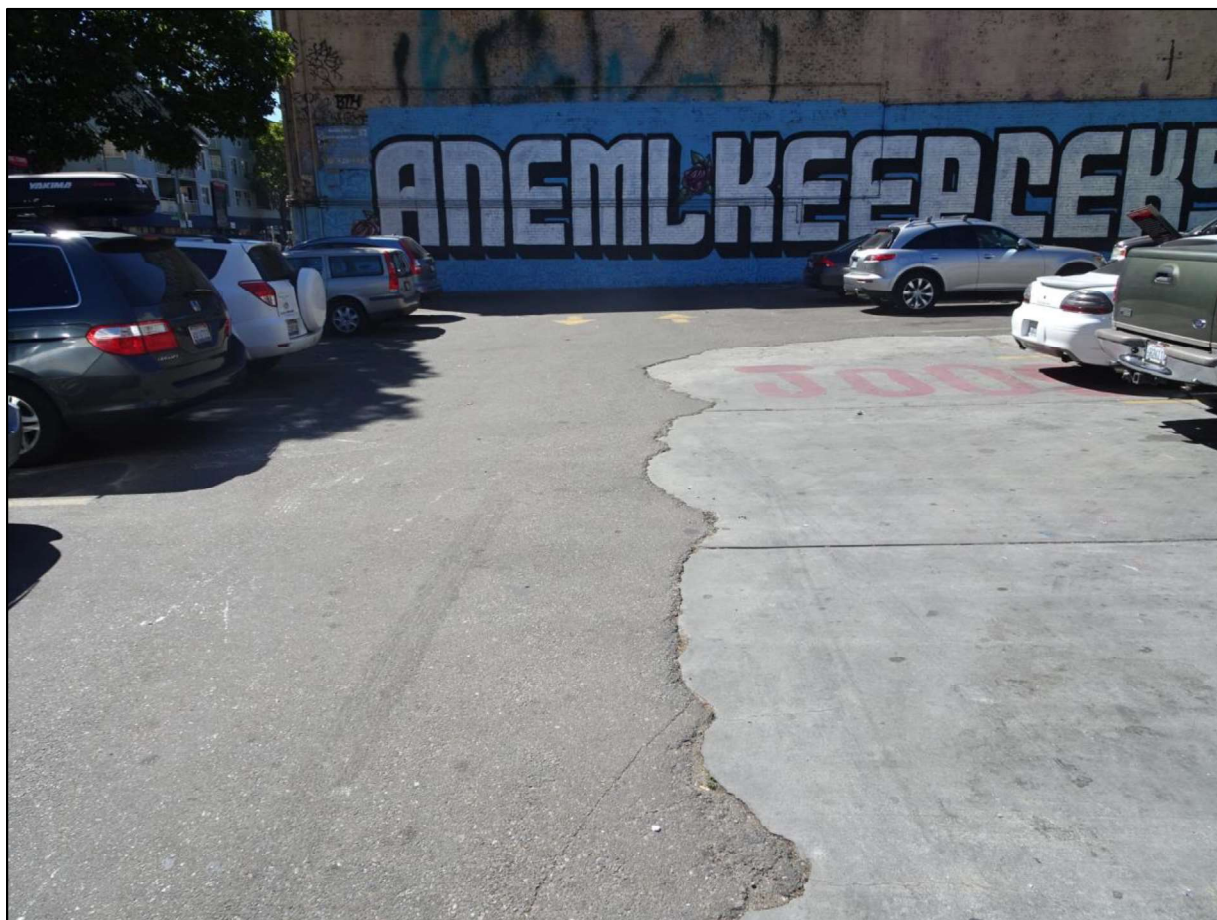
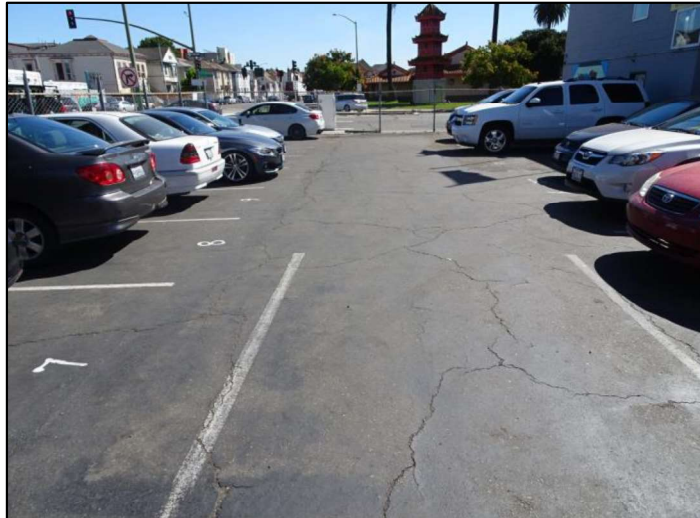
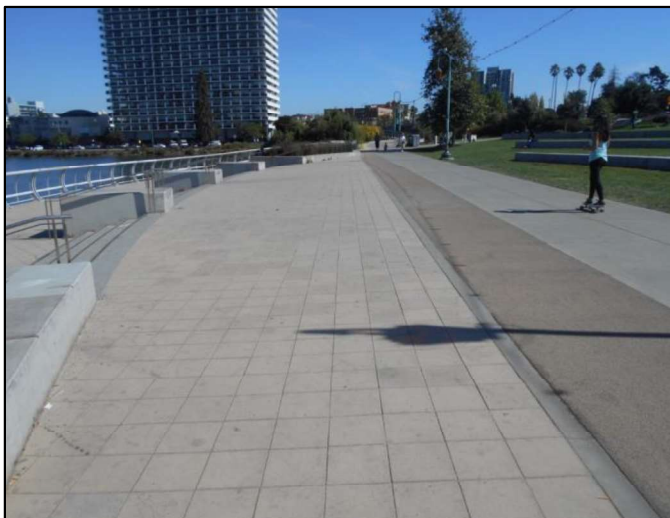


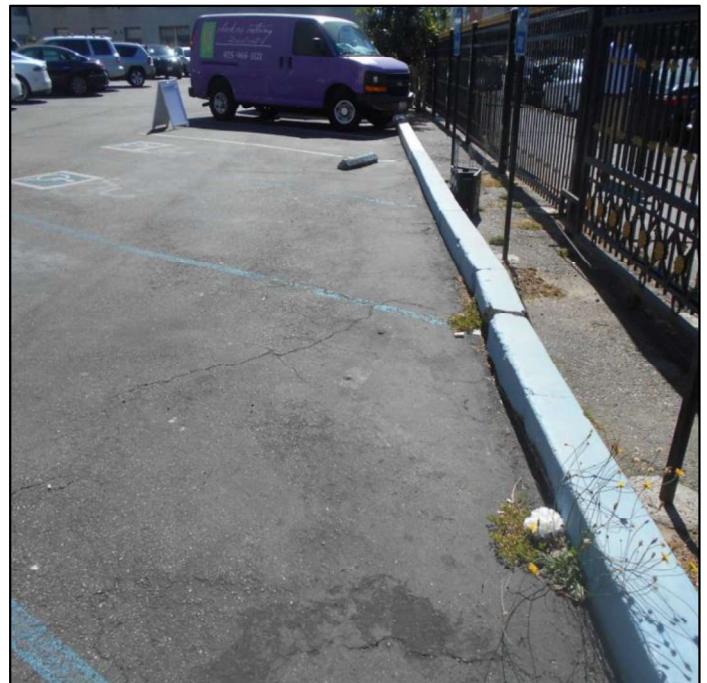
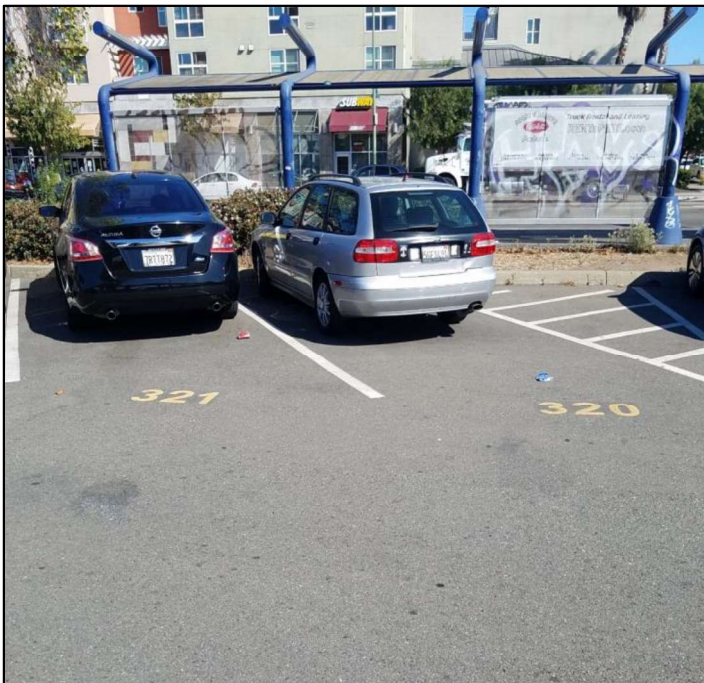
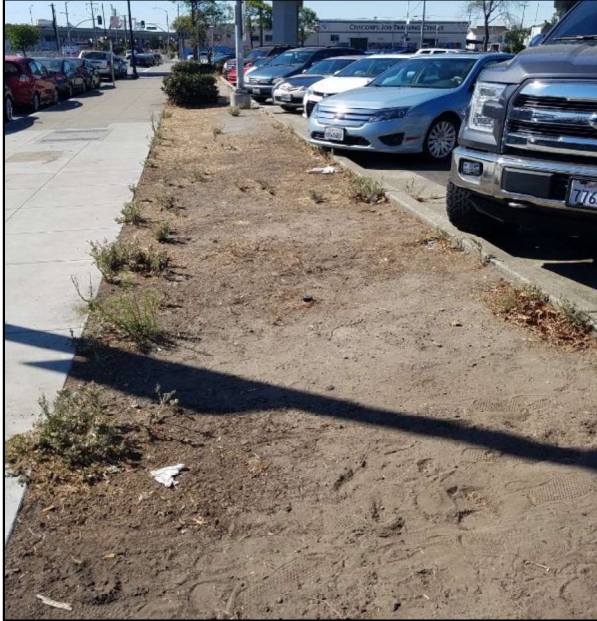
CATEGORY A - LOW TRASH LEVEL (NOT LITTERED)

Effectively no trash is observed in the assessment area. There may be some trash in the area, but it is not obvious at first glance. One individual could easily clean up all the trash observed while walking at normal pace. No additional trash reduction measures are needed in the assessment area. To see videos of sites with Category “A” trash levels, click [here](#).



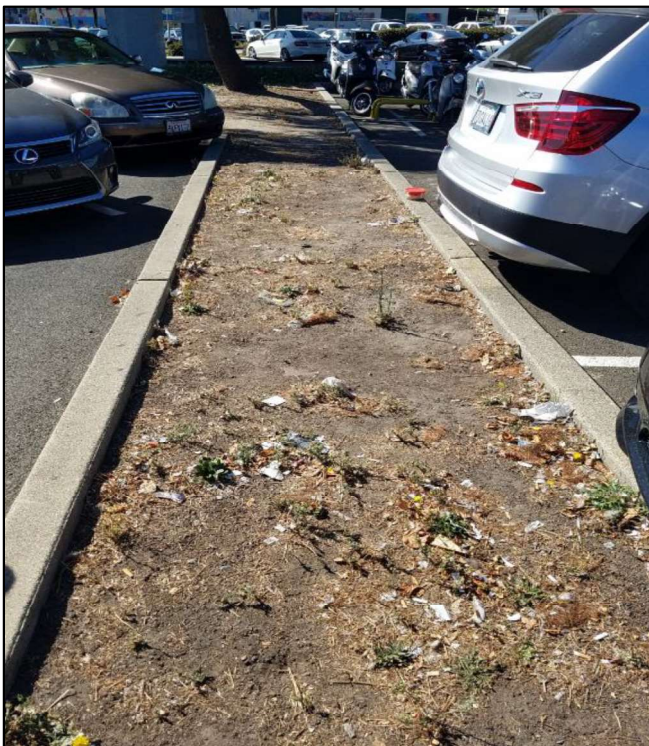
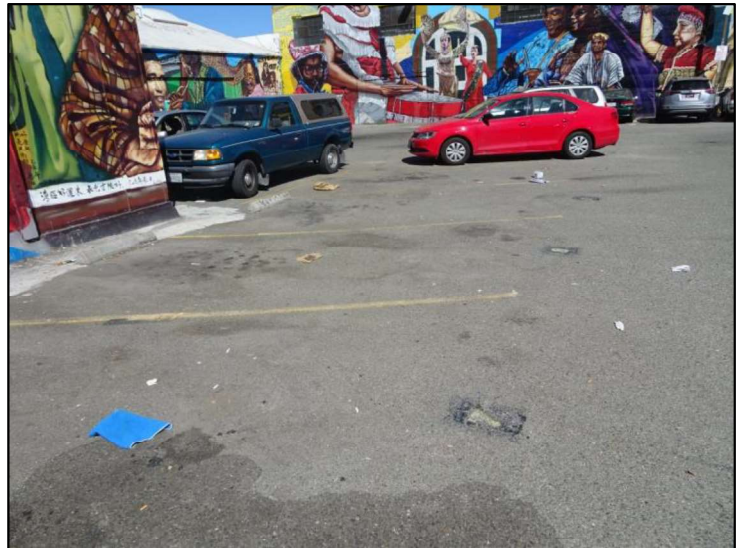
CATEGORY B – MODERATE TRASH LEVEL (SLIGHTLY LITTERED)

Predominantly free of trash, except for a few littered areas. Some trash is noticeable at first glance. The trash observed could be collected by one or two individuals, but would require walking at a slower than normal pace. Additional trash reduction measures are needed in the assessment area. To see videos of sites with Category “B” trash levels, click [here](#).



CATEGORY C: HIGH TRASH LEVEL (LITTERED)

Predominantly littered, except for a few clean areas. Trash is widely/evenly distributed and/or small accumulations are noticeable on the streets and sidewalks. It would take multiple people to remove all trash from the area, frequently requiring individuals to stop walking to remove the trash. Roughly 4 times as much trash as a “B” level. To see videos of sites with Category “C” trash levels, click [here](#).



CATEGORY D: VERY HIGH TRASH LEVEL (VERY LITTERED)

Trash is continuously seen throughout the assessment area and there is a strong impression of lack of concern for litter. Large piles of trash may be observed. It would take a large number of people during an organized effort to remove all trash from the area, consistently requiring individuals to stop to remove the trash. Roughly 3 times as much trash as a "C" level. To see videos of sites with Category "D" trash levels, click [here](#).

