





## Existing Conditions: FEMA Special Flood Hazard Areas



**About the California King Tides Project:** The California King Tides Project helps us visualize future sea level by observing the highest tides of today. You can help by taking and sharing photos of the shoreline during King Tides to create a record of changes to our coast and estuaries. Our OAAC sitewalk is a great opportunity to contribute to this project by uploading photos from this walk. The King Tides Project asks that participants do the following:

**A.) Geotag photos of King Tides** – make sure location services are turned on for your camera. Note that the King Tides Project says that “The best photos show the water level next to landmarks such as cliffs, roads, buildings, bridge supports, sea walls, staircases, and piers.”

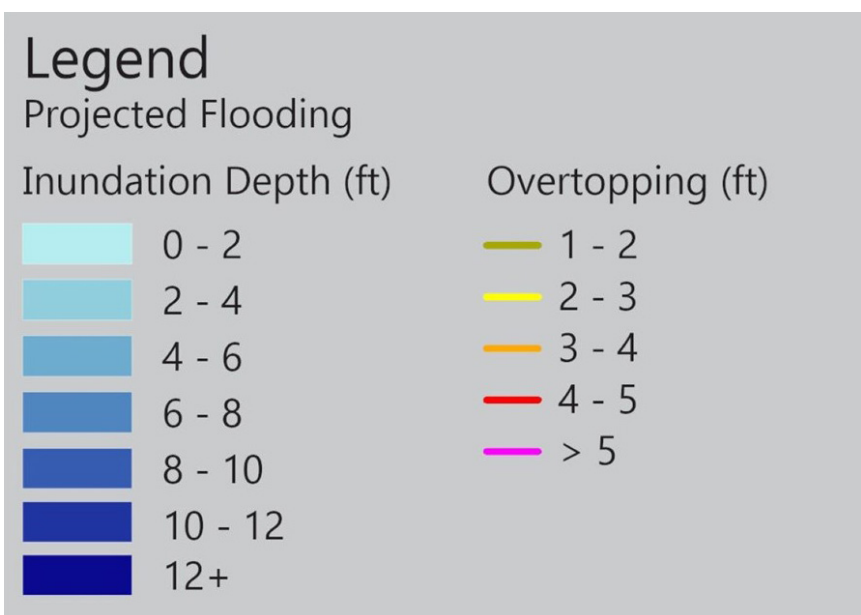
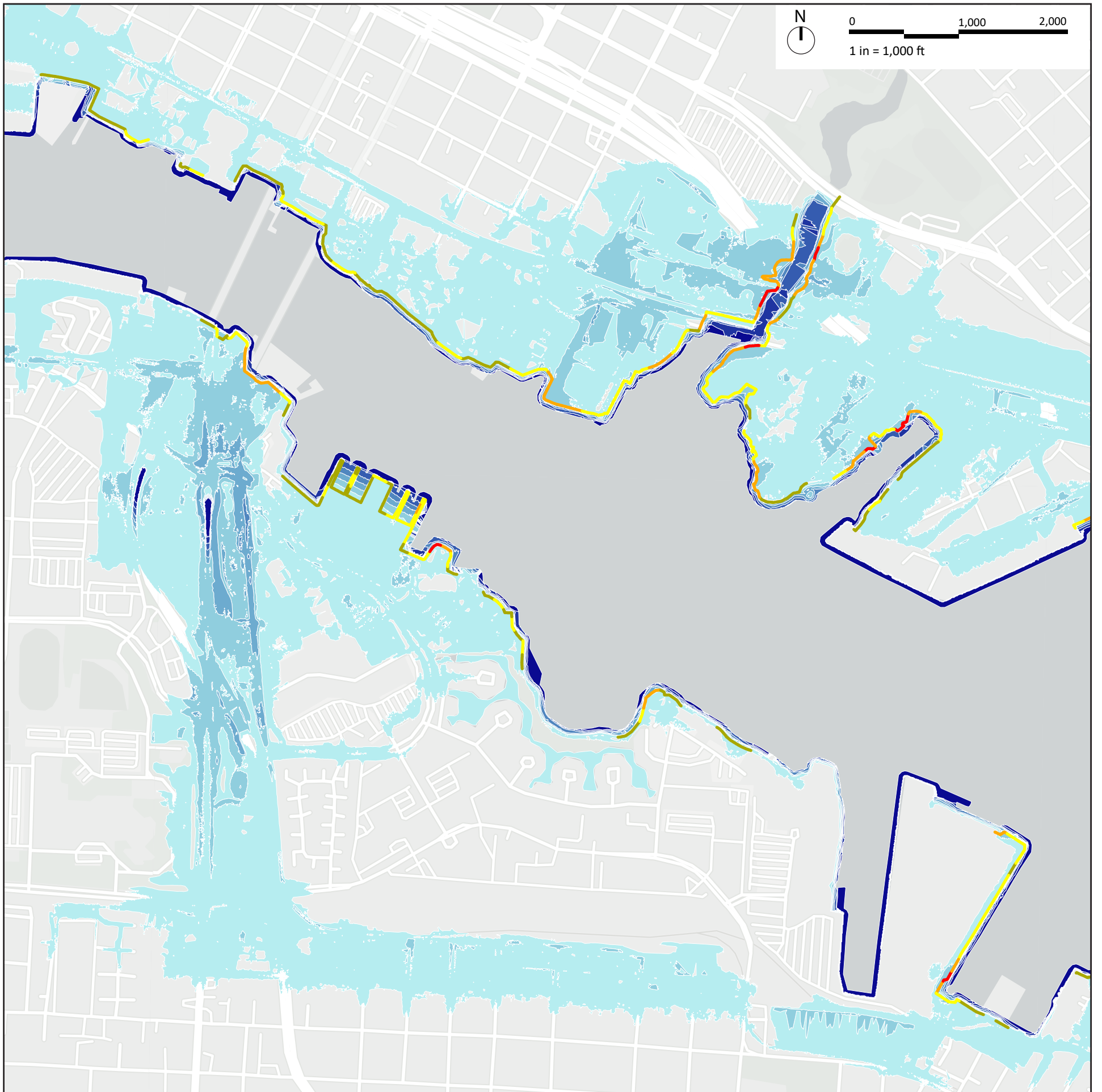
**B.) Upload your photo to the King Tides project!**

Use this URL to submit: <https://survey123.arcgis.com/share/046c76a1ffa14902bb8ab2d6bb874456> The King Tides Project photo upload form includes instructions in both English and Spanish. If you have trouble with using the upload form, you can email [kingtides@coastal.ca.gov](mailto:kingtides@coastal.ca.gov).

Note that uploading photos to the King Tide Project grants the California Coastal Commission “royalty-free right to use, copy, store, cache, host, prepare derivative works, reproduce, modify, adapt, publicly display and publish, redistribute, rebroadcast, and retransmit the shared photo as part of this service.”



# Existing Conditions: 24" Sea Level Rise + 1% AEP Flood





# Existing Conditions: 66" Sea Level Rise + 1% AEP Flood

