

Automatic Gas Shutoff Devices

Planning Building & Transportation

2263 Santa Clara Ave., Room 190

Alameda, CA 94501

510.747.6800

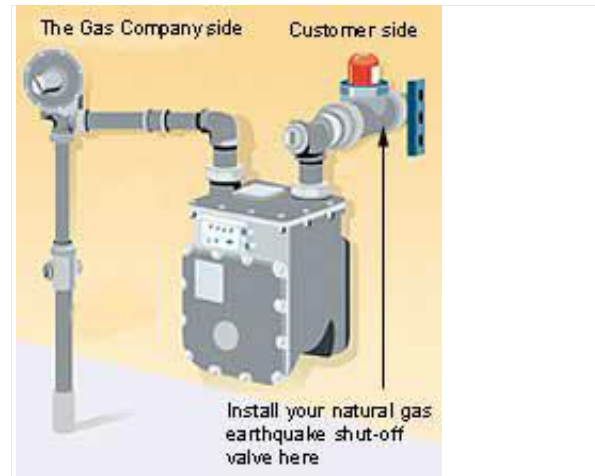
Hours: 8:30-3:00 Mon-Thur

CODE SECTION

CPC 1211.7

WHEN REQUIRED

- When the property changes ownership.
- Anytime the gas line is modified



TYPE OF DEVICE INSTALLED

- Must be certified by the State of California's Division of the State Architect.

INSTALLATION

- A plumbing permit is required.
- Earthquake actuated gas shutoff valves must be installed per the manufacturer's instructions.
- EQ valves must be installed on the building's gas houseline piping downstream of the utility point of delivery; i.e., *after* the PG&E gas shutoff valve, pressure regulator (if installed), meter(s), and the service tee.
- No attachments or connections of any kind are allowed on utility facilities prior to the point where the service tee connects to the gas houseline piping.
- Once installed, the valve must not obstruct the operation or serviceability of PG&E's piping, gas service shutoff valve, gas meter, or gas pressure-regulating equipment.
- The PG&E test-tee and reset screw must be accessible.

--