

City of Alameda Trash Load Reduction Program Frequently Asked Questions:

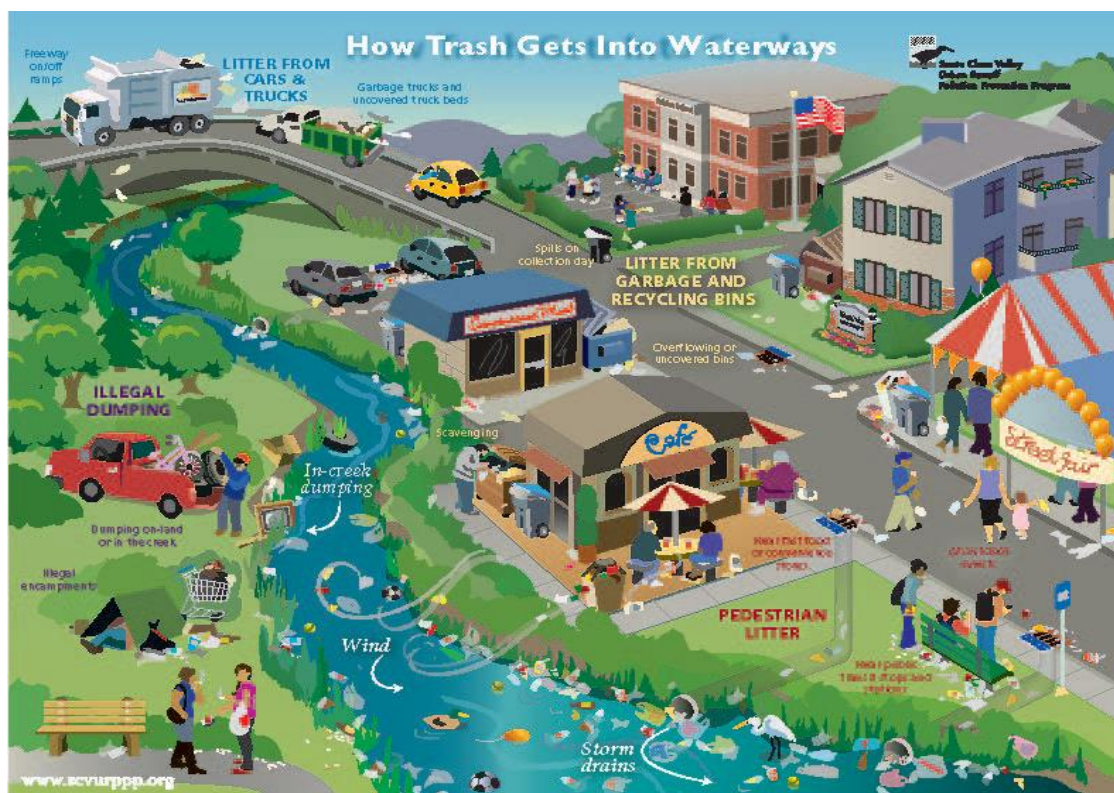
What is the Trash Load Reduction Program?

The Trash Load Reduction Program (Trash Reduction Program) requires private parcels that have drainage pipes plumbed to Alameda's public drainage system with moderate, high, or very high trash generation levels to control and reduce their trash generation rate to a low trash generation status.

Why is this a requirement?

Trash is a major pollutant source impacting water quality. Local, state and federal regulations prohibit stormwater pollution and require municipalities to control pollution sources, including programs to reduce trash and litter.

Alameda's Clean Water Program is a stormwater pollution prevention program designed to protect water quality by preventing pollutants, including trash, from entering the City's storm drains and waterways.



How Trash Gets into Waterways. Credits:

https://www.waterboards.ca.gov/water_issues/programs/stormwater/docs/trash_implementation/howtrashgetsinwaterways_lg.jpg

What is the legal basis for the trash reduction requirement?

Alameda Municipal Code, Article III, Chapter 18 specifically prohibits the discharge of pollutants and littering and requires businesses and facilities to implement Best Management Practices to not cause or contribute to stormwater pollution.

The Federal Clean Water Act establishes the basic structure for regulating discharges of pollutants into the waters of the United States and for regulating quality standards for surface waters. The Porter-Cologne Act is the state law that also governs water quality in California and the State Water Board regulates and establishes water quality standards and programs to protect the beneficial uses of water in the State.

What do I need to do to be in compliance?

Private lands that are confirmed by the City's assessment to be a medium, high, or very high trash generation area will be required to achieve a low trash generation status by implementing one of the following:

- Recommended action: Install and maintain a State-approved Full Trash Capture (FTC) device in each of the private stormwater inlets, enter a maintenance agreement with the City and provide annual reports demonstrating their operation and routine maintenance.
- Alternative action: Participate in City inspections and implement additional trash control actions that have been identified during the inspections. Properties that are consistently unable to meet or maintain a low trash generation standard may be required to install and maintain FTCs and may also be subject to enforcement actions and fees.

What are the different trash generation levels?

There are four trash generation levels: low, moderate, high and very high trash levels. The four levels were determined by the State Water Board. The City of Alameda uses a prescribed methodology developed by regional government agencies and working groups to determine an area's trash generation rate. See the supplemental On-land Visual Trash Assessment Protocol C-Area-based Survey document for photos and description of the different categories.

What is a Full Trash Capture device?

Trash capture devices are trash interceptors installed in catch basins or drain inlets to capture litter and other debris carried by stormwater so that litter and trash do not enter the main storm drainage system and discharge to the San Francisco Bay.



Trash capture device in a catch basin. Credits: <https://remfilters.com/triton-full-trash-capture/>

When is the deadline for achieving low trash generation status?

City staff may conduct initial inspections and will offer consultations in May-June 2024, and the required visual assessment and FTC installations will continue during July 2024 -June 2025. Starting in June 2025, private properties that have not achieved a low trash generation status may be required to install FTCs.

What happens if I don't achieve a low trash generation rate?

Private properties that are consistently unable to meet or maintain low trash generation standards may be required install and maintain State-approved¹ FTCs and may also be subject to enforcement actions and fees.

Where can I get more information about the Trash Reduction Program?

Information sessions will be held on:

- June 18, 11 am -12.00 pm
- June 26, 1 pm- 2pm

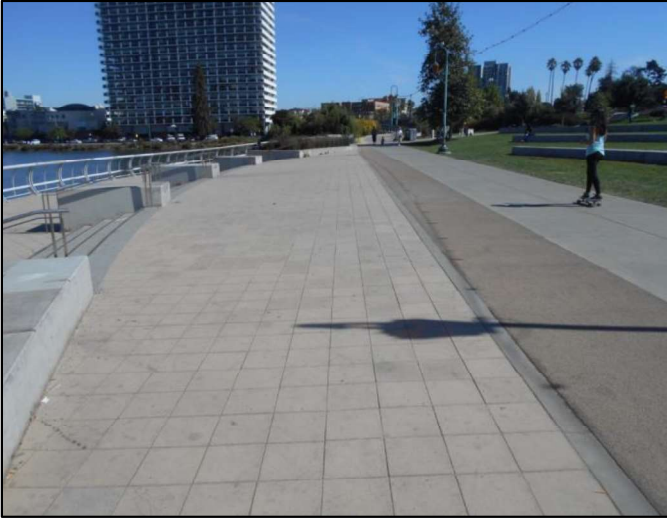
Please visit the City's Clean Water Program website

<https://www.alamedaca.gov/Departments/Public-Works-Department/Clean-Water-Program> to access the links for the webinar and for general information about the program.

¹https://www.waterboards.ca.gov/water_issues/programs/stormwater/docs/trash_implementation/2023/full-cptre-available-to-public.11.27.2023.pdf

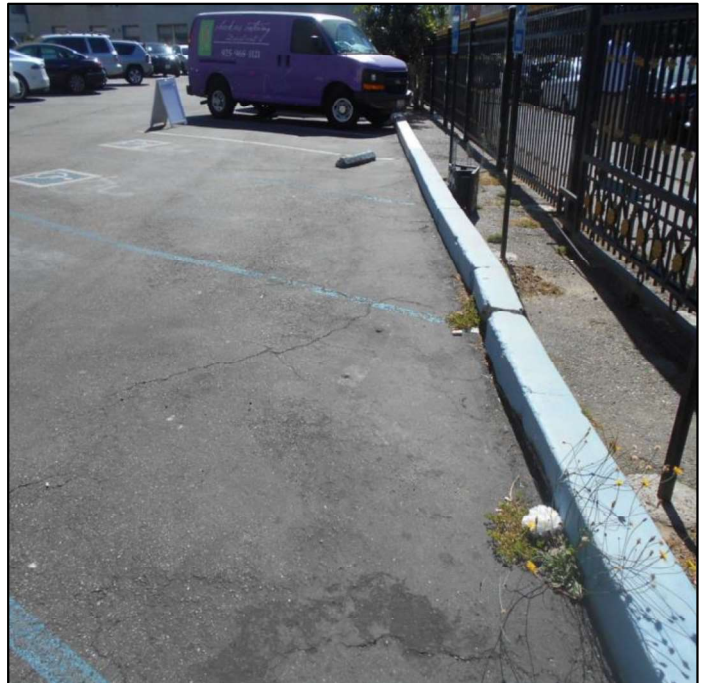
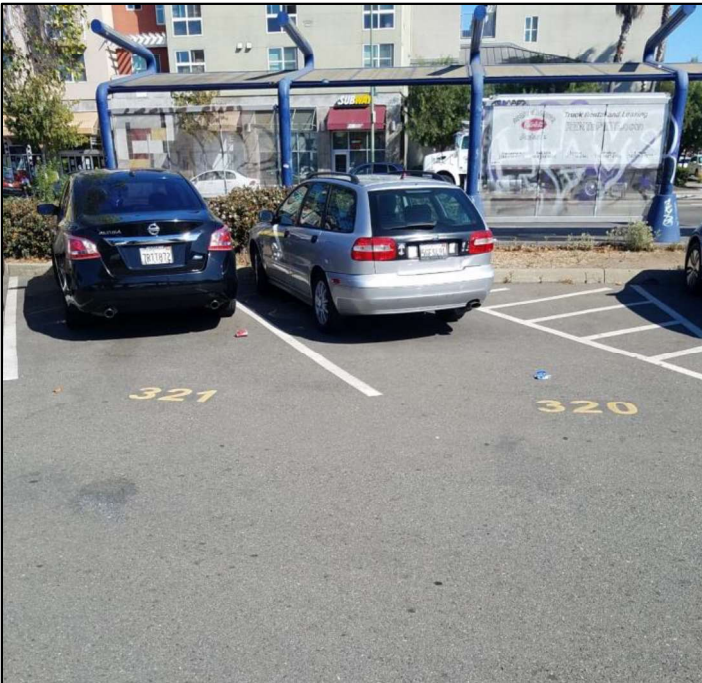
CATEGORY A - LOW TRASH LEVEL (NOT LITTERED)

Effectively no trash is observed in the assessment area. There may be some trash in the area, but it is not obvious at first glance. One individual could easily clean up all the trash observed while walking at normal pace. No additional trash reduction measures are needed in the assessment area. To see videos of sites with Category “A” trash levels, click [here](#).



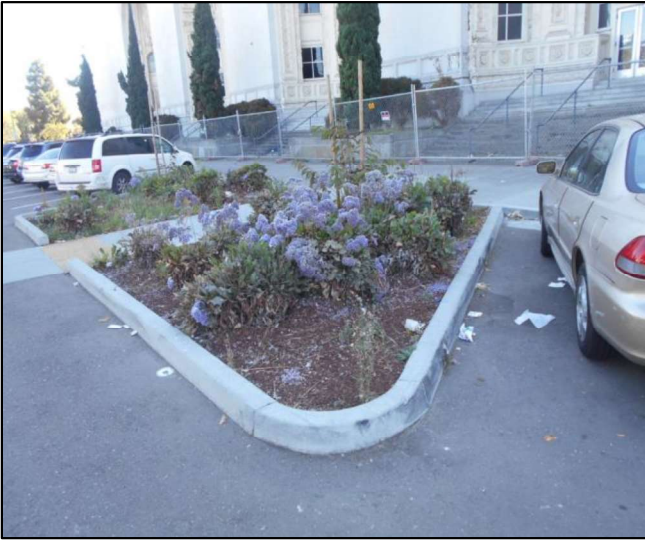
CATEGORY B – MODERATE TRASH LEVEL (SLIGHTLY LITTERED)

Predominantly free of trash, except for a few littered areas. Some trash is noticeable at first glance. The trash observed could be collected by one or two individuals, but would require walking at a slower than normal pace. Additional trash reduction measures are needed in the assessment area. To see videos of sites with Category “B” trash levels, click [here](#).



CATEGORY C: HIGH TRASH LEVEL (LITTERED)

Predominantly littered, except for a few clean areas. Trash is widely/evenly distributed and/or small accumulations are noticeable on the streets and sidewalks. It would take multiple people to remove all trash from the area, frequently requiring individuals to stop walking to remove the trash. Roughly 4 times as much trash as a "B" level. To see videos of sites with Category "C" trash levels, click [here](#).



CATEGORY D: VERY HIGH TRASH LEVEL (VERY LITTERED)

Trash is continuously seen throughout the assessment area and there is a strong impression of lack of concern for litter. Large piles of trash may be observed. It would take a large number of people during an organized effort to remove all trash from the area, consistently requiring individuals to stop to remove the trash. Roughly 3 times as much trash as a "C" level. To see videos of sites with Category "D" trash levels, click [here](#).

