

Versailles Ave: Proposed Speed Cushion Installation

**Virtual Community Meeting
6/12/24**



Agenda

- Introductions
- Overview: Speed cushion proposal
- Overview: Slow Streets to Neighborhood Greenway transition
- Questions and Answers/Discussion



Introductions

- City Staff
 - Rochelle Wheeler, Senior Transportation Planner
 - Lisa Foster, Acting Transportation Planning Manager
 - Allen Tai, Director of Planning, Building & Transportation
 - Scott Wikstrom, City Engineer
 - Sarah Henry, Public Information Officer
- Community members
 - Poll



Speed cushion proposal

- Install on Versailles, between Calhoun and San Jose in late summer/fall
- 2 sets of speed cushions, on north and south end
- Leverage street repaving project
- Remove barricades when complete
- Notification:
 - 230+ letters sent to all within 300 ft
 - Email to 1300+ people
 - Posted on Slow Streets webpage



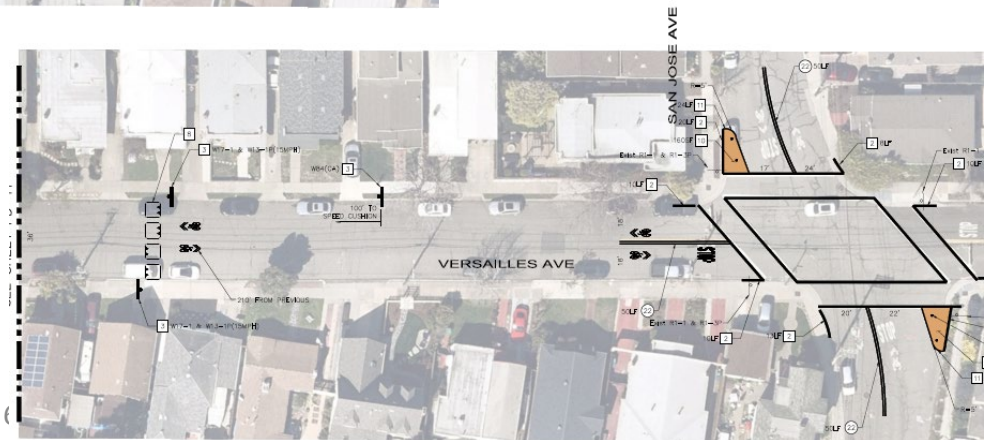
What are speed cushions?

- Purpose: Slow traffic speeds and improve safety for people walking, bicycling and driving
- 3 cushions, that fire and garbage trucks can easily use
- Moveable

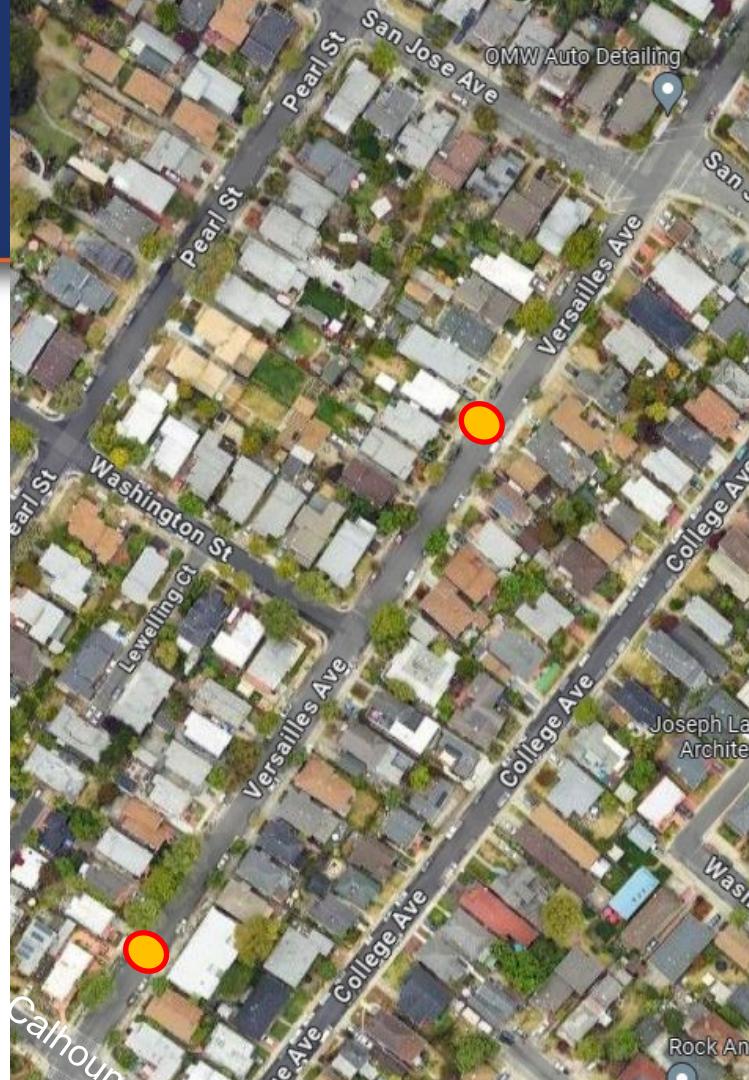


Locations

VERSAILLES AVE & OTIS DR



Locations



Why now?

- Versailles being repaved
- Support early transition of Slow Streets to Neighborhood Greenways
- Versailles (Calhoun to Fernside) is a designated Neighborhood Greenway in the Council-approved Active Transportation Plan
- Neighborhood Greenways, sometimes called bicycle boulevards, are streets designed to give priority to people walking and bicycling, and to allow bicyclists and motorists to safely share the road on low-volume, low-speed, local streets.



Neighborhood Greenways



Neighborhood Greenways

- Implementation approach under development now; will include community engagement
- City's work plan:
 - In 2024, start construction on transitioning one Slow Street to Neighborhood Greenway, using quick-build materials
 - In 2025, complete transition of Versailles, San Jose and Pacific Slow Streets to Neighborhood Greenways. Includes removal of all barricades.



What do you think?

- Poll
- Q&A
- Discussion



Next steps

- Staff will take all input and make determination on how to proceed
- Stay updated: www.alamedaca.gov/subscribe
 - Select “Transp: Neighborhood Greenway” list
- www.SlowStreetsAlameda.org
- Email: transportation@alamedaca.gov

